



# AACER

SPORTS FLOORING

## ScissorLoc™

Aacer ScissorLoc's criss-cross solid wood sub floor creates a dimensionally stable system with excellent natural ventilation capabilities. The option of the PowerVent™ Airflow system adds a feature which will detect moisture and start drying the system with mechanical airflow.



Sweets.com

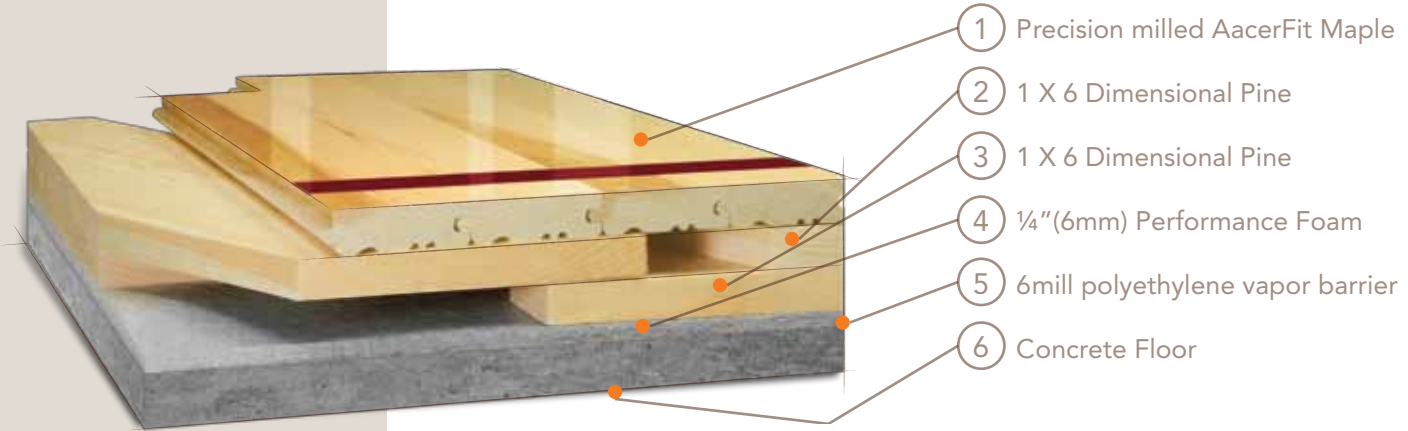


# FLOATING



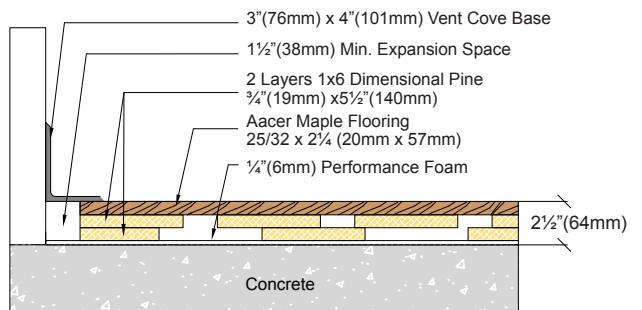
## ScissorLoc™

Available are these ScissorLoc™ Floor Systems: I, II, III, DC and LP.

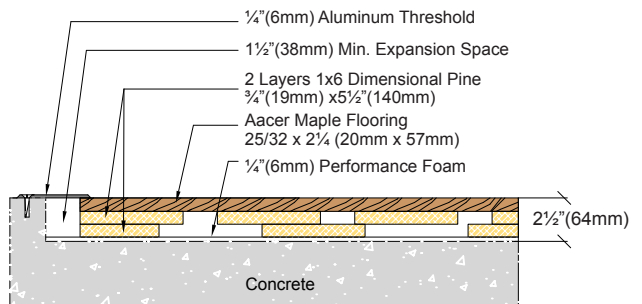


Certified	
Green Status LEED Contributors	<p>FSC Maple - MRc7 FSC SubFloor Components - MRc7 EQ - 4.2 Regional Materials MRc5.1 &amp; 5.2</p>
Optional Versions	I, II, III, DC, LP, Powervent™
Resiliance	Performance Foam
Slab Depression	<p><b>ScissorLoc™, I, II, D.C.</b> 25/32" (20 mm) flooring - 2 ½" (64mm) 33/32" (26 mm) flooring - 2 ¾" (70mm)</p> <p><b>ScissorLoc™ LP</b> 25/32" (20 mm) flooring - 2" (51mm) 33/32" (26 mm) flooring - 2 ¼" (57mm)</p> <p><b>ScissorLoc™ III</b> 25/32" (20 mm) flooring - 3" (76mm) 33/32" (26 mm) flooring - 3 ¼" (83mm)</p>
Retrofit	System maybe adjusted to fit any slab profile
Subfloor Construction	Solid Pine
System Type	Floating System
Testing Laboratory	
U.S. Patent#	#5,299,401
Warranty	Lifetime available

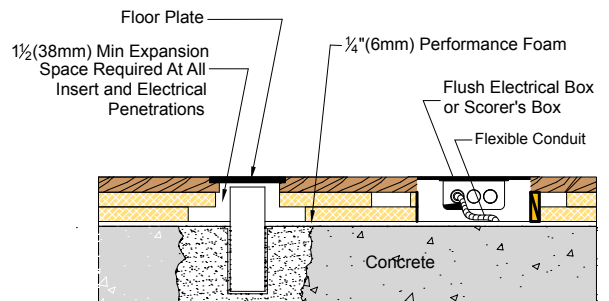
### WALL BASE



### THRESHOLD



### EQUIPMENT



**AacerFlooring.com (877) 582-1181**

It is the policy of Aacer Flooring to continuously improve its line of products. Therefore, Aacer Flooring reserves the right to change, modify or discontinue systems, specifications and accessories of all products at any time without notice or obligation to purchaser.